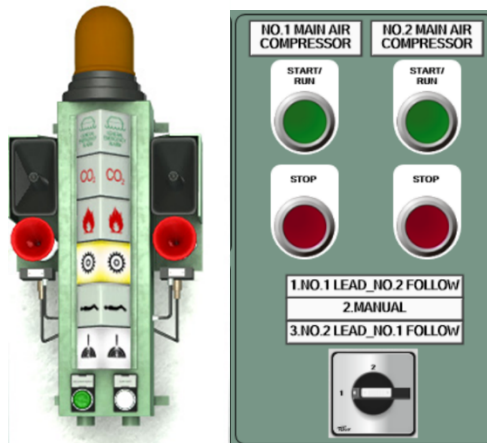


## STEPS IN THE APPLICATION OF SCENARIO SCENARIO 11

1. Heavy Alarm sound and Signal light column for machinery alarm is illuminated



2.Message on ECR computer panel will appear

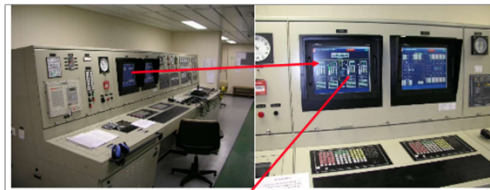


Fig. 2.: ECR Computer panel

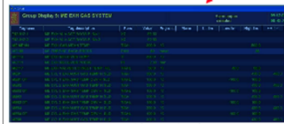


Fig. 3.: ECR Computer panel (screenshot)



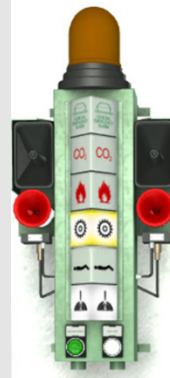
Fig. 4.: ECR Computer panel (screen)

3.The alarm of the starting air compressor is acknowledged by the operator on the AMS menue. Student will have to press ACKNOWLEDGE BUTTON in ECR computer panel It means just a mute alarm no off all system



Fig. 5.: ECR Computer panel (Acknowledge button)

4.The alarm horn will and light on signal column will stop blinking but continuously ON



5.The letters on message on ECR computer panel: alarm messages with change color to yellow letters

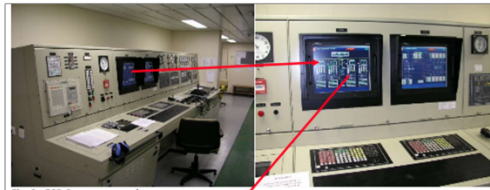


Fig. 2: ECR Computer panel

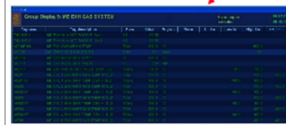


Fig. 3: ECR Computer panel (screenshot)

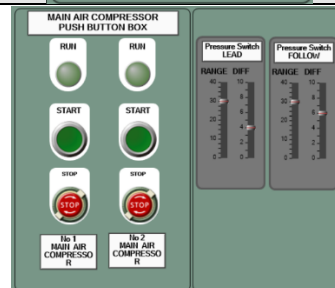


Fig. 4: ECR Computer panel (screen)

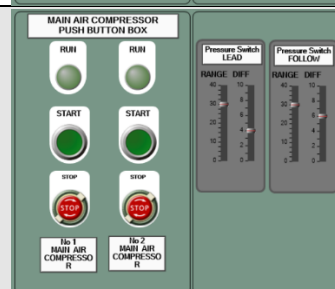
6.The starting air compressors don't respond to the engine control console comands given by the operator



7.Student will physically have to go from ECR to ER in front of the local push button box together with the pressure switches of starting air compressor 1&2.



8.Student will try to start locally Starting air compressor No1but it is not able to be started from local station, but starting air compressor No2 responds



9.After few minutes of operation of the compressor and rising the pressure above 22 bar Messages on ECR computer panel will DELETE

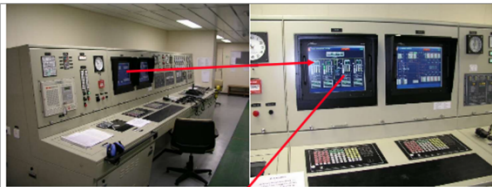


Fig. 2.: ECR Computer panel

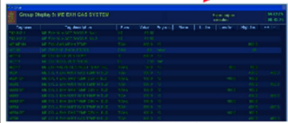
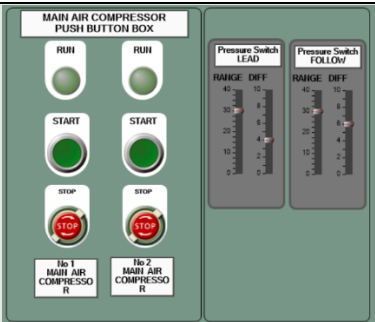


Fig. 3.: ECR Computer panel (screenshot)



Fig. 4.: ECR Computer panel (screen)

10.Student will stop the compressor after reach 30 bar



11.The student informs the bridge for the compressor No1 failure and that starting air compressor No2 is operated manually.

12.FINISHED SCENARIO